

# I | | NATURAL INGREDIENTS



ARGEV | | E  
*Let's dare*

Argeville's reputation is based on its expertise in the selection, production and processing of **traditional natural ingredients**. We are committed to building a direct and personal relationship with producers in France and around the world to offer the best of natural products.

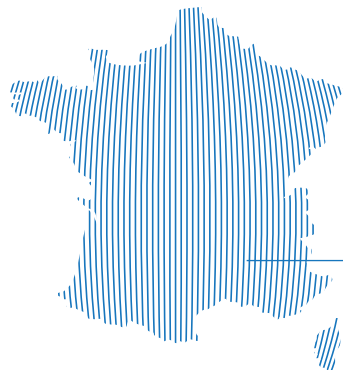
We have set up a **premium range of local ingredients** born from our French terroir and based on a short and sustainable circuit. We have also elaborated **specialities from our century-old know-how**.

At the origin of the plants, an exclusive range of raw materials is **carefully chosen for our clients**.

The transformation of the raw materials is done in our factory in Grasse area and in our **Natural Center, La Laupie**, located in Provence, close to the producers.

These two factories are equipped with performing traditional methods & artcraft extraction process in compliance with **quality, safety and environmental standards**.

Preserving the nature, the extraction, transformation and creation processes of the aromatic ingredients are carried out in full respect for the environment.



**Provence Natural Center**  
La Laupie



LOCAL INGREDIENTS

ABSOLUTE	
LAVENDER ABSOLUTE	4
LAVANDIN GROSSO ABSOLUTE	5
CLARY SAGE ABSOLUTE	6
EVERLASTING ABSOLUTE	7
DAFFODIL ABSOLUTE	8
MIMOSA ABSOLUTE	9
PINUS SYLVESTRIS ABSOLUTE	10
HAY ABSOLUTE	11
WHEAT BRAN ABSOLUTE	12
SEAWEED ABSOLUTE	13
ESSENTIAL OIL	
LAVENDER ESSENTIAL OIL	4
CLARY SAGE ESSENTIAL OIL	6
EVERLASTING ESSENTIAL OIL	7

ARGEVILLE'S SPECIALITIES

ABSOLUTE	
ROSE ABSOLUTE	14
ESSENTIAL OIL	
DECOLORIZED COLD-PRESSED ESSENTIAL OIL OF BERGAMOT	15
DECOLORIZED SFUMATRICE ESSENTIAL OIL OF LEMON	16
COLD-PRESSED ESSENTIAL OIL OF CLEMENTINE	17
DECOLORIZED ESSENTIAL OIL OF BITTER ORANGE	18
CONCENTRATED (5X) DECOLORIZED ESSENTIAL OIL OF BLOOD ORANGE	19
EXTRACT	
CISTUS EXTRACT	20
SELECTONE	21
RESINOID	
LABDANUM RESINOID	22
GALBANUM RESINOID	23
BENZOIN RESINOID	24
OLIBANUM RESINOID	25
TONKA BEANS RESINOID	26

## IDENTITY SHEET

**INCI**  
LAVANDULA ANGUSTIFOLIA FLOWER EXTRACT

**BOTANICAL SOURCE**  
*Lavandula angustifolia Mill.*

**PROCESSED PART**  
Flowering tops

**N° CAS EU**  
90063-37-9

**N° CAS US**  
8000-28-0

**N° FEMA (e.o./abs)**  
2622/2620

**N° FDA**  
182.20

### HARVEST



**ORIGIN**  
France - Alpes-de-Haute-Provence



## PERFUMERS VISION

*Essential Oil:*

### AROMATIC FLOWERY

Powerful, fresh and sharp lavender aroma with penetrating camphoraceous notes. Flowery touches and herbal woody dry-down. Heart note with great impact on top notes, the aromatic choice of excellence.

*Absolute:*

### AROMATIC COUMARIN

Smooth, suave and very close to the botanical source, brings pronounced coumarin sweetness, powdery and aromatic characteristics. Heart note that captures the spirit of this iconic French cultivar.



## IDENTITY SHEET

### INCI

LAVANDULA HYBRIDA FLOWER EXTRACT

### BOTANICAL SOURCE

*Lavandula angustifolia x Lavandula latifolia L.*

### PROCESSED PART

Flowering tops

N° CAS EU

91722-69-9

N° CAS US

8022-15-9

N° FEMA

2618

N° FDA

182.20

### HARVEST



### ORIGIN

France - Alpes-de-Haute-Provence



## PERFUMERS VISION

### POWDERY CUMARIN

Aromatic note with a slightly camphoraceous note, it brings great impact to the heart with a soft almond drydown.



## IDENTITY SHEET

### INCI

SALVIA SCLAREA FLOWER/LEAF/STEM EXTRACT

### BOTANICAL SOURCE

*Salvia sclarea L.*

### PROCESSED PART

Flowering aerial parts

### N° CAS EU

84775-83-7

### N° CAS US

8016-63-5

### N° FEMA (e.o./abs)

2321/2320

### N° FDA

182.20

### HARVEST



### ORIGIN

France - Alpes-de-Haute-Provence



## PERFUMERS VISION

### Essential Oil:

#### HERBAL AROMATIC

Intriguing and complex aroma of herbaceous tea-like note with bitter and leathery undertones. Soft tobacco and velvet nuances. Top note with impact also on heart notes, bringing sophistication to any composition.

### Absolute:

#### AMBERY AROMATIC

Rich amber note with aromatic tones, pronounced grassy and velvety sensations.



## IDENTITY SHEET

INCI  
HELICHRYSUM ITALICUM FLOWER EXTRACT

BOTANICAL SOURCE  
*Helichrysum italicum* (Roth) G.Don, subsp.italicum

PROCESSED PART  
Flowering tops

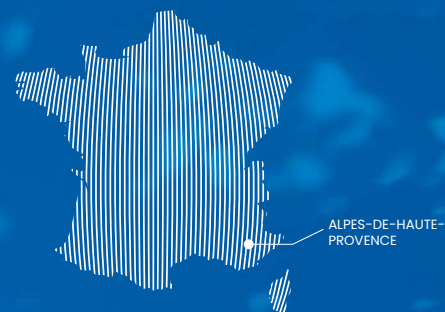
N° CAS EU            N° CAS US  
90045-56-0        8023-95-8

N° FEMA            N° FDA  
2592                -

### HARVEST



ORIGIN  
France - Alpes-de-Haute-Provence



## PERFUMERS VISION

*Essential Oil:*

### AROMATIC AMBERY

Typical Mediterranean scent, with an astringent top note sensation and powerful maquis effects on heart. Useful also in leather and agrestic accords.

*Absolute:*

### AMBERY AROMATIC

Definitely warmer and more opulent than the essential oil, it develops a distinctive ambery sensation with liquorice undertones. Useful for tobacco and unique dark honey accords.



## IDENTITY SHEET

INCI  
NARCISSUS JONQUILLA EXTRACT

BOTANICAL SOURCE  
*Narcissus jonquilla* L.

PROCESSED PART  
Flowers

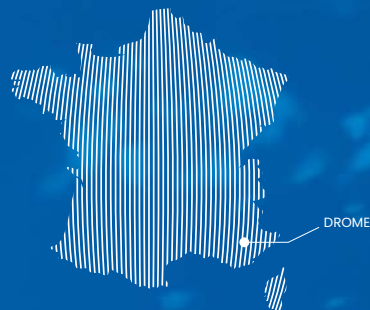
N° CAS EU            N° CAS US  
90064-25-8        8023-75-4

N° FEMA            N° FDA  
-                      -

### HARVEST



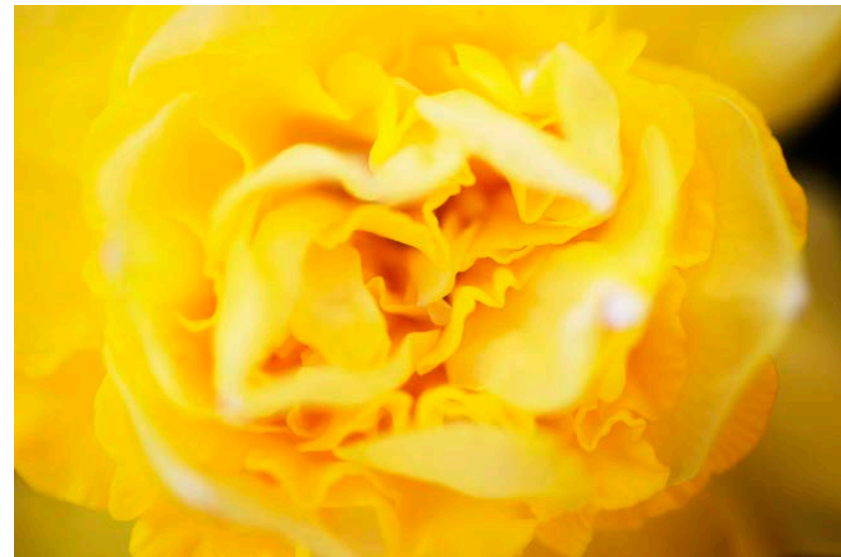
ORIGIN  
France - Drome



## PERFUMERS VISION

### FLORAL GREEN

A less known but still unique flower, close to *Narcissus poeticus*. It recreates a true yellow flowers ambience with green undertones of hay. Very rare and difficult to process, it is reserved only for true connoisseur.



## IDENTITY SHEET

INCI  
ACACIA DECURRENS FLOWER EXTRACT

BOTANICAL SOURCE  
*Acacia decurrens var. dealbata*

PROCESSED PART  
Flowers

N° CAS EU  
98903-76-5

N° CAS US  
8031-03-6

N° FEMA  
2755

N° FDA  
172.510

### HARVEST



ORIGIN  
France - Tanneron



## PERFUMERS VISION

### FLORAL POWDERY

Solar, honey imbued, sweet and spicy intense floral scent, with pronounced waxy and green violet nuances throughout its evolution.



## IDENTITY SHEET

### INCI

PINUS SYLVESTRIS LEAF EXTRACT

### BOTANICAL SOURCE

*Pinus sylvestris L.*

### PROCESSED PART

Leaves

N° CAS EU  
84012-35-1

N° CAS US  
8023-99-2

N° FEMA  
-

N° FDA  
172.510

### HARVEST



### ORIGIN

France - Alpes-de-Haute-Provence



## PERFUMERS VISION

### WOODY SMOKY

Extracted from the pure pulp of this tree, it concentrates all the reminiscence of the forest in this single product. Dry woody with slightly balsamic undertones and good impact from heart to base notes.



## IDENTITY SHEET

### INCI

GRASS-HAY HERB EXTRACT

### BOTANICAL SOURCE

*Gramineae*

### PROCESSED PART

Aerial parts

### N° CAS EU

100209-32-3

### N° CAS US

8031-00-3

### N° FEMA

-

### N° FDA

-

### HARVEST



### ORIGIN

France - Drome



## PERFUMERS VISION

### ALMOND HERBAL

Delightfully sweet and powerful, this herbaceous scent of freshly cut hay presents undertones of fig jam with incomparable tenacity. Heart, base note with strong connotations of warm and almondy alpine sweet grass.



## IDENTITY SHEET

### INCI

TRITICUM VULGARE BRAN EXTRACT

### BOTANICAL SOURCE

*Triticum vulgare Vill. (syn. Triticum aestivum L.)*

### PROCESSED PART

Bran

N° CAS EU  
84012-44-2

N° CAS US  
68916-76-7

N° FEMA  
-

N° FDA  
-

### HARVEST



### ORIGIN

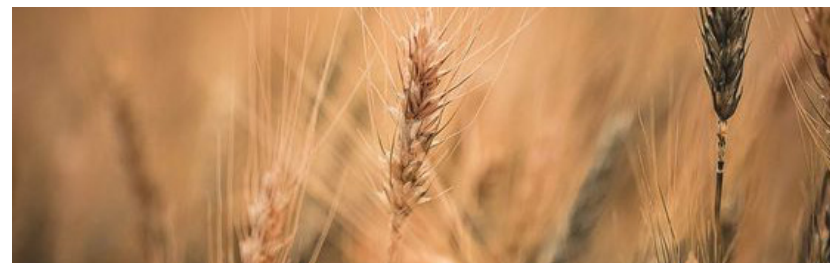
France - Drome



## PERFUMERS VISION

### GOURMAND

Soft but multifaced profile with a gourmand impact, it develops within the heart and the base a unique, cereal, honey-like effect, with malt sensations.



## IDENTITY SHEET

INCI  
FUCUS VESICULOSUS EXTRACT

BOTANICAL SOURCE  
*Fucus vesiculosus L.*

PROCESSED PART  
Seaweed

N° CAS EU  
84696-13-9

N° CAS US  
68917-51-1

N° FEMA  
-

N° FDA  
-

### HARVEST



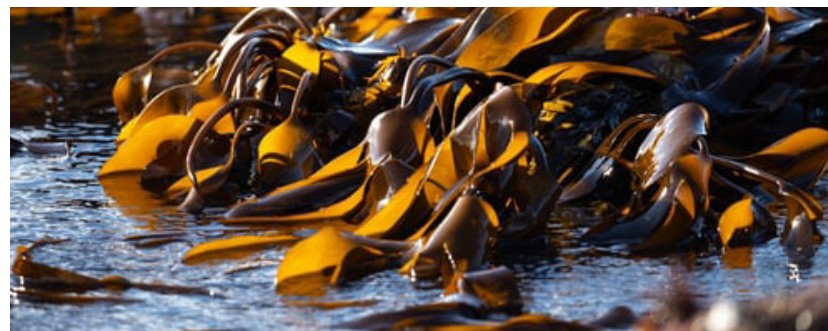
ORIGIN  
France - Brittany



## PERFUMERS VISION

### AQUATIC WOODY

Primitive smell of wild seashores with accentuated iodine effect since top notes and dark mossy presence on base notes.



## IDENTITY SHEET

**INCI**  
ROSA DAMASCENA FLOWER EXTRACT

**BOTANICAL SOURCE**  
*Rosa x damascena Mill.*

**PROCESSED PART**  
Flowers

**N° CAS EU**  
90106-38-0

**N° CAS US**  
8007-01-0

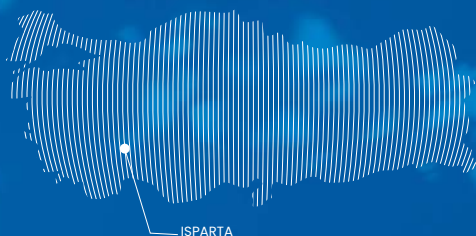
**N° FEMA**  
2988

**N° FDA**  
182.20

### HARVEST



**ORIGIN**  
Turkey - Isparta



## PERFUMERS VISION

### FLORAL OPULENT

Iconic warm and luxurious odour profile with jam-fruity tones, powdery nuances and spicy opulence.



## IDENTITY SHEET

INCI  
CITRUS AURANTIUM BERGAMIA FRUIT EXTRACT

BOTANICAL SOURCE  
*Citrus aurantium L. subsp bergamia*

PROCESSED PART  
Epicarp

N° CAS EU            N° CAS US  
89957-91-5        8007-75-8

N° FEMA            N° FDA  
2153                182.20

### HARVEST



ORIGIN  
Italy - Messina



## PERFUMERS VISION

### CITRUS

The most sophisticated of all the Hesperidic fragrances, this ingredient is a perfumery timeless pillar. With its fresh but not sharp opening, the spicy touch and delicacy, it is a blessing for any fragrance. Chosen by our perfumers for a prolonged «Earl Grey» tea impression, the transparency in the message and the sparkling effect it has in both masculine and feminine fragrances.



## IDENTITY SHEET

### INCI

CITRUS LIMON PEEL EXTRACT

### BOTANICAL SOURCE

*Citrus limon (L.) Osbeck*

### PROCESSED PART

Epicarp

### N° CAS EU

84929-31-7

### N° CAS US

8008-56-8

### N° FEMA

2625

### N° FDA

182.20

### HARVEST



### ORIGIN

Italy - Messina



## PERFUMERS VISION

### CITRUS

Premium quality made by the use of a gentle cold extracting machine. Compared with the regularly expressed one, shows a zesty, slightly metallic nuance, able to enlighten top notes with extraordinary subtlety. These fleeting notes transition to a sweeter citral body with a pleasant, green and slightly aldehydic background.



## IDENTITY SHEET

### INCI

CITRUS RETICULATA, X C. SINENSIS PEEL EXTRACT

### BOTANICAL SOURCE

*Citrus clementina hort.*

### PROCESSED PART

Epicarp

### N° CAS EU

93686-22-7

### N° CAS US

8008-31-9

### N° FEMA

4855

### N° FDA

182.20

### HARVEST



### ORIGIN

Italy - Messina

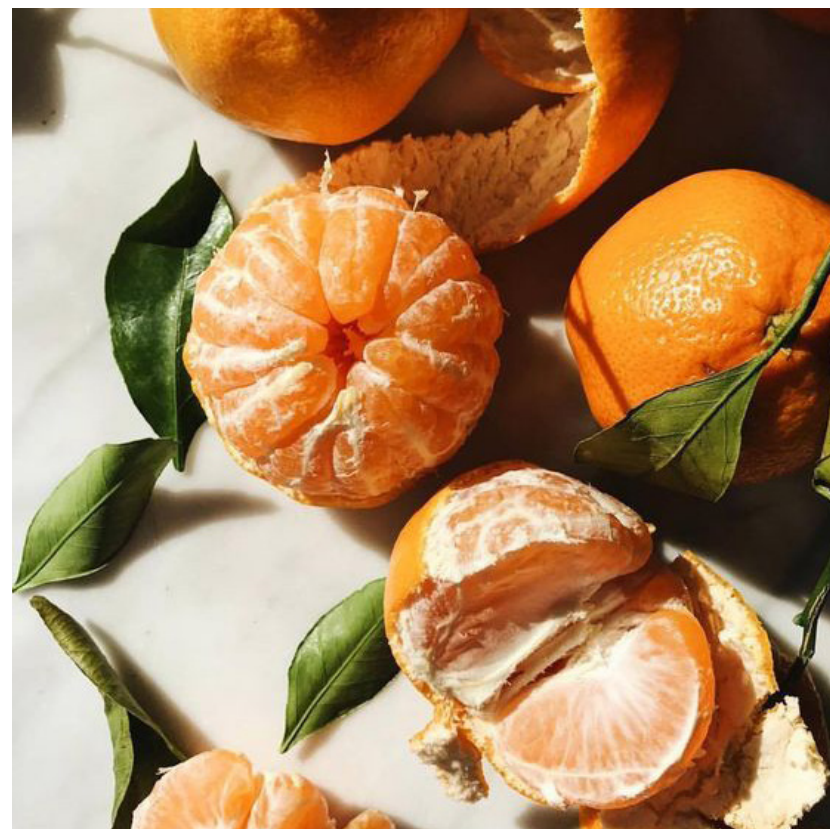


## PERFUMERS VISION

### CITRUS

This hybrid fruit combines the qualities of both its origins: remembering of mandarin with its seductive smell twisted with a sweeter and rounded odour profile, commonly shared with the sweet orange it originates from.

An unexpected combination usable in any application and opening up to new creative approaches in body care supports.



## IDENTITY SHEET

### INCI

CITRUS AURANTIUM AMARA PEEL EXTRACT

### BOTANICAL SOURCE

*Citrus aurantium L.*

### PROCESSED PART

Epicarp

N° CAS EU  
72968-50-4

N° CAS US  
68916-04-1

N° FEMA  
2823

N° FDA  
182.20

### HARVEST



### ORIGIN

Italy - Messina



## PERFUMERS VISION

### CITRUS

The queen among oranges, this bitter version is bursting freshness and petit grain tang, uplifting and awakening all the senses. An ingredient able to boost several sumptuous floral bouquets. Used in colognes to impart a distinct character, it can be adopted in any composition, where a sparkling touch of seduction is needed.



## IDENTITY SHEET

### INCI

CITRUS SINENSIS FRUIT EXTRACT

### BOTANICAL SOURCE

*Citrus sinensis L.*

### PROCESSED PART

Epicarp

### N° CAS EU

8028-48-6

### N° CAS US

8008-57-9

### N° FEMA

2825

### N° FDA

182.20

### HARVEST



### ORIGIN

Italy - Messina



## PERFUMERS VISION

### CITRUS

The fruit of this specific variety is characterized by the deep orange colour in the skin and an almost red inner pulp. Our specific concentrated version brings a vibrant impact on top notes combined with a mouth-watering tartness, more complex than a sweet orange, adding a red berry undertone. This speciality is colourless and with a marked effect also in the heart notes. A new creative tool for perfumers, useful in any application.



## IDENTITY SHEET

**INCI**  
CISTUS LADANIFERUS LEAF/STEM EXTRACT

**BOTANICAL SOURCE**  
*Cistus ladanifer L.*

**PROCESSED PART**  
Leaves/Stems

<b>N° CAS EU</b>	<b>N° CAS US</b>
89997-74-0	8016-26-0

<b>N° FEMA</b>	<b>N° FDA</b>
-	172.510

### HARVEST



**ORIGIN**  
Spain - Andalusia



ANDALUSIA

## PERFUMERS VISION

### AMBERY WARM

One of our specialities, a warm cistus ambery note with powerful green impact from the top notes to the base.



## IDENTITY SHEET

INCI  
PARFUM

BOTANICAL SOURCE  
*Cistus ladanifer L.*

PROCESSED PART  
-

N° CAS EU  
-

N° CAS US  
-

N° FEMA  
-

N° FDA  
-

HARVEST



ORIGIN  
Various



## PERFUMERS VISION

### AMBERY SMOKY

An in-house speciality, this custom-built product obtained through the cistus transformation is able to develop its leathery, ambery presence with smoky nuances from the top notes down. Unique and powerful.



## IDENTITY SHEET

### INCI

CISTUS LADANIFERUS LEAF/STEM EXTRACT

### BOTANICAL SOURCE

*Cistus ladanifer L.*

### PROCESSED PART

Gum resin

N° CAS EU  
89997-74-0

N° CAS US  
8016-26-0

N° FEMA  
-

N° FDA  
172.510

### HARVEST



### ORIGIN

Spain - Andalusia



ANDALUSIA

## PERFUMERS VISION

### AMBERY WARM

Warm ambery note with pronounced oriental and leathery undertones. Excellent base note and fixative presence, it brings depth to any composition.



## IDENTITY SHEET

**INCI**  
FERULA GALBANIFLUA GUM EXTRACT

**BOTANICAL SOURCE**  
*Ferula galbaniflua*

**PROCESSED PART**  
Gum resin

**N° CAS EU**  
93165-40-3

**N° CAS US**  
8023-91-4

**N° FEMA**  
-

**N° FDA**  
172.510

### HARVEST



**ORIGIN**  
Various



## PERFUMERS VISION

### GREEN WOODY

Green and substantive, this note differs from the more classical essential oil, being less sharp. Excellent fixative properties and able to bring special effects to bottom notes.



## IDENTITY SHEET

**INCI**  
STYRAX TONKINENSIS RESIN EXTRACT

**BOTANICAL SOURCE**  
*Styrax tonkinensis*

**PROCESSED PART**  
Gum resin

**N° CAS EU**  
84012-39-5

**N° CAS US**  
9000-72-0

**N° FEMA**  
2133

**N° FDA**  
172.510

### HARVEST



**ORIGIN**  
Laos



## PERFUMERS VISION

### AMBERY VANILLA

Rich but not heavy and intensely sweet but not sugary, warm, ambery and balsamic, vanilla-like aroma with cinnamon-like undertones. A beautiful vibrant base note, shimmering through all the composition.



## IDENTITY SHEET

**INCI**  
BOSWELLIA CARTERII RESIN EXTRACT

**BOTANICAL SOURCE**  
*Boswellia carterii*

**PROCESSED PART**  
Gum resin

**N° CAS EU**  
89957-98-2

**N° CAS US**  
8016-36-2

**N° FEMA**  
2816

**N° FDA**  
172.510

### HARVEST



**ORIGIN**  
Somalia



## PERFUMERS VISION

### AMBERY MINERAL

Mystical ambery incense note with metallic feelings and great radiance on base notes. Excellent fixative, able to bring a touch of the orient within any composition.



## IDENTITY SHEET

INCI  
DIPTERYX ODORATA BEAN EXTRACT

BOTANICAL SOURCE  
*Dipteryx odorata*

PROCESSED PART  
Beans

N° CAS EU  
90028-06-1

N° CAS US  
8024-04-2

N° FEMA  
-

N° FDA  
-

### HARVEST



ORIGIN  
Brazil



## PERFUMERS VISION

### GOURMAND ROASTED

Classic nutty, almond-like profile with pronounced coumarin effect. Extremely efficient in oriental notes, it plays a role within base notes with its gourmand touch.



# ARGEVILLE

*Let's dare*

argeville.com



@Argeville 

@ArgevilleCompany 

Historical Center: **Mougins** - Provence Natural Center: **La Laupie**  
Asia Centers: Regional Center **Bangkok & Guangzhou**, **Hô Chi Minh City**  
Middle East Creative Center: **Dubai** - Latin America Center: **Bogota** - Eastern Europe Center: **Moscow**

*This document is the result of the work of our teams. It contains confidential information, please do not disclose its content.*